

SY-777

Time & data collection terminal

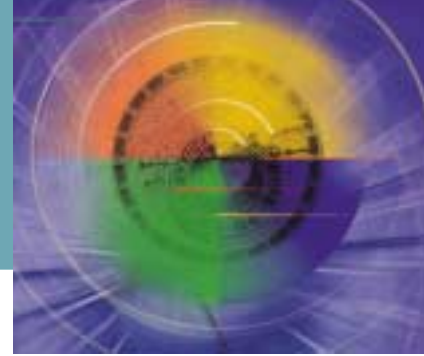


WHEN ONLY THE BEST WILL DO

- Synel SY-777 is a newly developed, easy to program data collection terminal. It is designed for effective Time & Attendance, Shop-Floor control, Job Costing and Access Control applications.
- Synel SY-777 provides you with the optimum solution to rnet connectivity (TCP/IP). It communicates on-line on real time with different databases on a PC (query).
- Synel SY-777 can operate independently or as part of a network, using powerful communication software for friendly and flexible programming.



SY-777



Time & data collection terminal

When only the best will do

Flexibility and Security

Synel SY-777 offers direct connection to net via TCP/IP or UDP, thus allowing you to access any terminal from any location on a network for a great flexibility.

The system maintains absolute security by allowing only authorized personnel to access various layers of communication software. Cardholders can gain access to premises by swiping their badge and/or entering their PIN.

Communication Software

The SY-777 is fully programmable. Synel provides the user with a powerful yet friendly-to-use communication and programming software. Standard Windows programs & DLL protocols allow users to interface their own application software.

The communication software is a state-of-the-art, menu driven application generator. It enables the user to redefine the terminal's functionality to meet numerous requirements. The software allows the terminal to generate data entry dialogs and task costing data entries and to collect attendance data transactions. SY-777 communicates on-line in real time with different databases on a PC, via TCP/IP communication protocol.

Reliability

Synel SY-777 data collection terminal has been tested for optimal reliability. A high MTBF ensures virtually uninterrupted performance. The sealed keypad and the unique ergonomic design reduce maintenance costs. The terminal is manufactured to ISO-9002.

Functional & Technical Characteristics

- Communication done via Ethernet, Modem, RS-232 or RS-485 for multidrop of up to 31 terminals on a single communication port
- Magnetic (track 1 or 2)/bar code/proximity built-in readers
- Operates both off-line and on-line with a host computer under multiple operating systems: Windows NT/MS-DOS/OS/2/2000/XP
- 8 programmable function keys and 14 keys on an ergonomic designed keypad
- Illuminated 16x2 large alphanumeric character LCD display with backlighting
- Scroll keys allow users to view large messages on the display board
- 128 kB RAM for storing over 10,000 transactions
- Lithium battery for data retention for up to 36 months
- Rechargeable back-up battery enables over 10 hours of full operation during power failure
- Automatic switchover to daylight savings time
- Perpetual real-time clock
- Audible tones for badge acceptance / rejection
- Warning indicator for battery and memory status

Physical Characteristics

Size: 22.7 cm x 14.8 cm x 7 cm
Weight: 1400 gr.

Electrical Characteristics

Voltage: 230 / 115 Vac +10%, 50/60 Hz
Current Consumption: max. 100 mA

Environmental Characteristics

Temperature: 0° to 50° C
Humidity: up to 95% RH

Optional Accessories

- Secondary external magnetic/bar code/proximity reader for greater flexibility
- 12 Vdc, 1 A dry-contact relay to activate a bell or a door latch
- Internal modem, 2400/14,400/1200 bps, for remote communication
- Ethernet 10BASET
- Weigand interface (26, 34, 36, 37, 44, 48 bit)



"Forward Security Systems"

authorized distributor Synel Industries

Lenina st.21-A, Lytkarino, Moscow area, 140081, Russia

Tel.:+7(095)506-1916; Fax.:+7(095)552-7881

e-mail:info@biometricsecurity.ru;

fs-system@mail.ru

http://www.biometricsecurity.ru

Synel Industries Ltd. **SY**